

Name _____

DOUBLE TIME

Read the words that end in double consonants in the word box.
Fill in each sentence with the word that fits.

1. Mom will _____ me at bedtime.



2. I can hear the _____.



3. Jack and Jill went up the _____.



4. If it is not on, it is _____.



5. A bee can _____.



Word Box

buzz

bell

off

hill

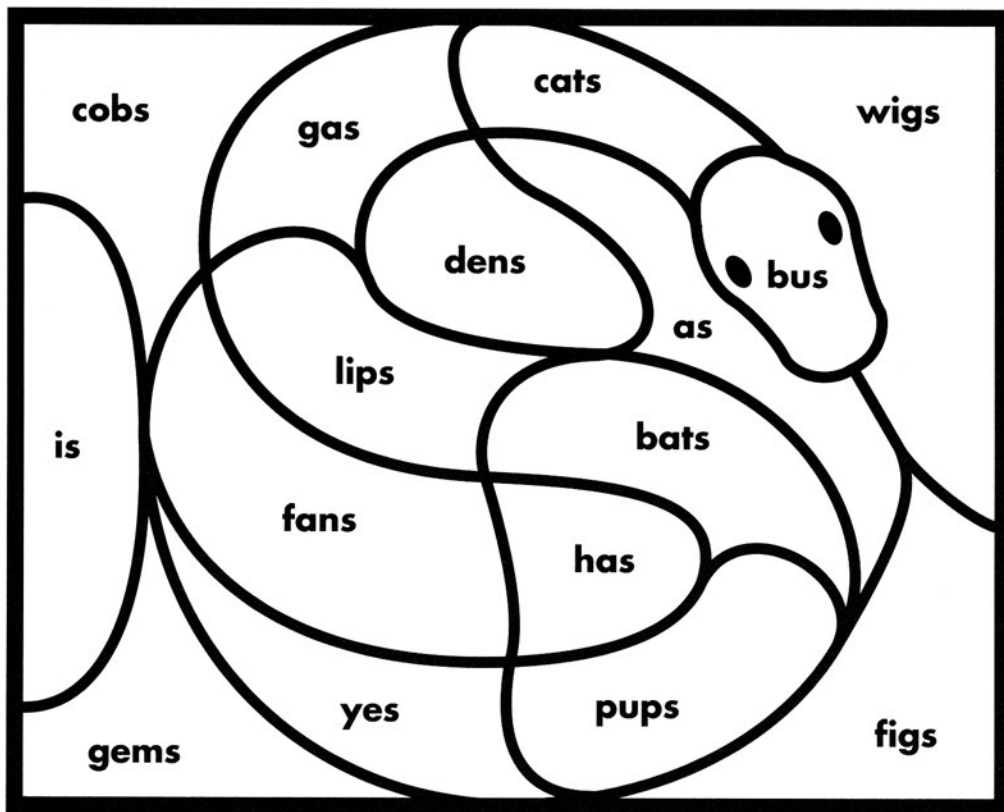
kiss

Name _____

MYSTERY PICTURE

Color the words that have the same ending sound as lips green.

Color the words that have the same ending sound as gems brown.



BONUS: How many words are plural (more than one)?

Name _____

MATCH 'EM!

Fill in letters from the blend box to complete the sentence.
Then draw a line from the sentence to its picture.

1. The qui - - - - sits on the bed.



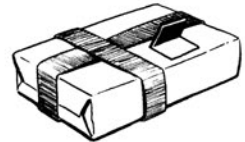
2. Dad got a gi - - - - from us.



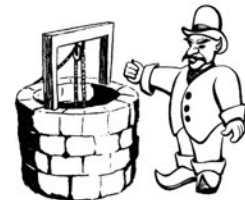
3. An e - - - - will toss a nut in the well.



4. The red pants are made of si - - - - .



5. Mom will he - - - - me when I am cut.



6. I pass the hot dogs when we ca - - - - .

**Blend Box**

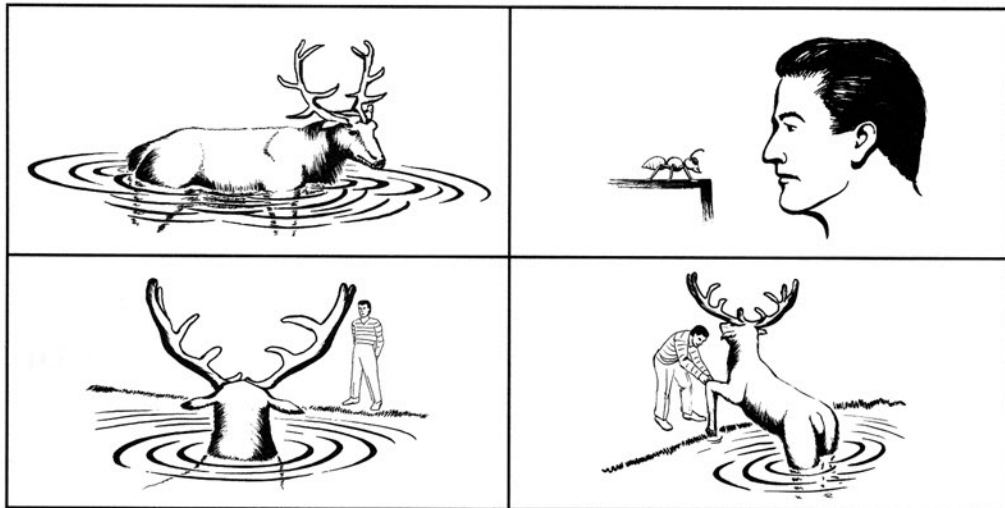
lk ft lf lp lt mp

Name _____

THE ELK AND THE ANT

Fill in letters from the blend box to complete the story. Use the pictures to help you.

An elk we - - - for a jog, but he su - - - in the po - - -. An ant went to a - - - a man for help. The elk ke - - - his head up until the ant got help from the man. The man did his be - - - and got the elk out.



Blend Box

nd nk nt pt sk st

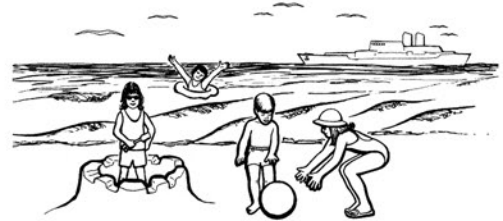
Name _____

MINI STORIES

Use the blends in the box below each story to fill in the blanks to complete each story.

I am ad we went to the sea. We dug up ams in the sand and am in the sea. My pals got a ab. We had a ast !

Blend Box				
bl	cl	cr	gl	sw



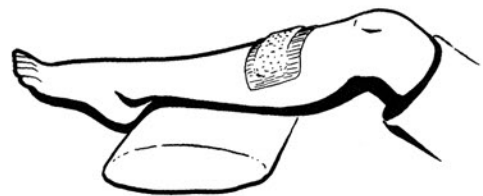
That at had a yellow ag. He lost his ip and let it op. His an was to get a red flag.

Blend Box				
br	dr	fl	gr	pl



I got a cut on my leg. I will op it up. The cut will be a ab.

Blend Box	
pr	sc

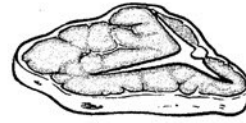


Name _____

PICTURE BLENDER

Draw a line from the picture to its beginning letters.

sk



sp

sl



st

sm



tr

sn



tw

scr

spr

spl

str

